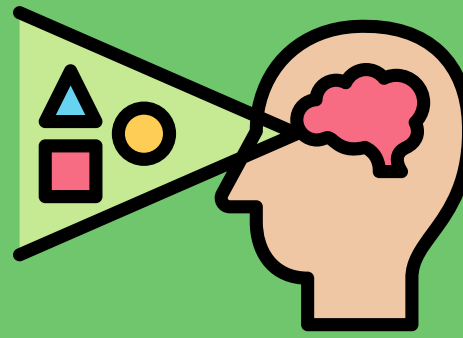


Sensory Seekers... who love exploring with their eyes

Toy borrowing guide



Toy Librarian says:

“Top toys for visual sensory seekers use lights, mirrors, colours and patterns to support visual exploration. These toys help children practise visual tracking, attention and focus, while providing engaging and regulating sensory input.

Visual sensory play helps children learn to process visual information like colour, shape, light and motion, which supports attention, coordination and emotional regulation.”



S074 Floor Tiles

Liquid sensory floor tiles provide bright colours and moving liquid patterns that respond to pressure from hands or feet. The shifting designs support visual tracking and sensory regulation, while the cause-and-effect movement encourages children to step, press and explore.



S18 Mirror Tray Light Refraction Bundle

Mirror and light-refraction resources support visual sensory exploration through reflection, light play, colour mixing and pattern discovery. These experiences encourage children to observe changes in light and reflection, helping develop visual attention and curiosity while providing calming, mesmerising sensory input.



AC19 Spirograph Design Kit

Spirograph activities create repeating patterns, symmetry and intricate designs, making them ideal for visual sensory seekers who enjoy structure and detail. Drawing with gears supports visual focus, pattern recognition and fine-motor coordination, while the predictable movement can feel regulating and satisfying.



S13 Air Toobz

Air Toobz combines movement, airflow and visual cause-and-effect play. Children can watch scarves or foam balls travel through clear tubes, supporting visual tracking, anticipation and problem-solving. The moving objects provide strong visual feedback that keeps children engaged and curious.



C68 Magnetic Tiles

Magnetic tiles are a fantastic option for visual sensory seekers because their transparent colours, shapes and patterns invite children to explore light, symmetry and design. Building with tiles supports visual-spatial thinking, colour recognition and pattern-making, while the open-ended nature of construction play encourages sustained visual attention and creativity.



E37 Gem Spinning Top

The rainbow gem spinning top provides captivating visual movement, colour blending and sparkle effects as it spins. Watching the motion and changing colours supports visual tracking, focus and attention, making it a simple but highly engaging toy for children who enjoy movement-based visual input.